

CHCHD2 Antibody (Center)
Affinity Purified Rabbit Polyclonal Antibody (Pab)
Catalog # AP10055c**Specification**

CHCHD2 Antibody (Center) - Product Information

Application	WB, FC, IHC-P,E
Primary Accession	O9Y6H1
Other Accession	NP_057223.1
Reactivity	Human
Host	Rabbit
Clonality	Polyclonal
Isotype	Rabbit IgG
Calculated MW	15513
Antigen Region	74-103

CHCHD2 Antibody (Center) - Additional Information**Gene ID** 51142**Other Names**

Coiled-coil-helix-coiled-coil-helix domain-containing protein 2, mitochondrial, Aging-associated gene 10 protein, HCV NS2 trans-regulated protein, NS2TP, CHCHD2, C7orf17

Target/Specificity

This CHCHD2 antibody is generated from rabbits immunized with a KLH conjugated synthetic peptide between 74-103 amino acids from the Central region of human CHCHD2.

Dilution

WB~~1:1000
FC~~1:10~50
IHC-P~~1:50~100
E~~Use at an assay dependent concentration.

Format

Purified polyclonal antibody supplied in PBS with 0.09% (W/V) sodium azide. This antibody is purified through a protein A column, followed by peptide affinity purification.

Storage

Maintain refrigerated at 2-8°C for up to 2 weeks. For long term storage store at -20°C in small aliquots to prevent freeze-thaw cycles.

Precautions

CHCHD2 Antibody (Center) is for research use only and not for use in diagnostic or therapeutic procedures.

CHCHD2 Antibody (Center) - Protein Information

Name CHCHD2

Synonyms C7orf17

Function Transcription factor. Binds to the oxygen responsive element of COX4I2 and activates its transcription under hypoxia conditions (4% oxygen), as well as normoxia conditions (20% oxygen) (PubMed:[23303788](#)).

Cellular Location

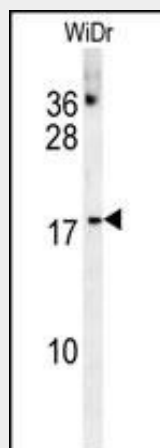
Nucleus. Mitochondrion. Mitochondrion intermembrane space. Note=Mainly localized in the intermembrane space.

CHCHD2 Antibody (Center) - Protocols

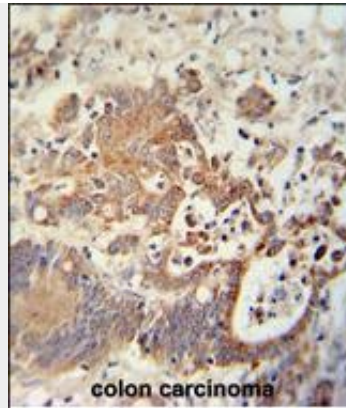
Provided below are standard protocols that you may find useful for product applications.

- [Western Blot](#)
- [Blocking Peptides](#)
- [Dot Blot](#)
- [Immunohistochemistry](#)
- [Immunofluorescence](#)
- [Immunoprecipitation](#)
- [Flow Cytometry](#)
- [Cell Culture](#)

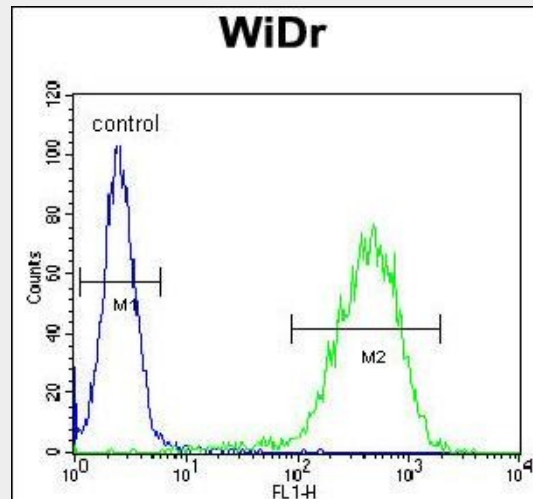
CHCHD2 Antibody (Center) - Images



CHCHD2 Antibody (Center) (Cat. #AP10055c) western blot analysis in WiDr cell line lysates (35ug/lane). This demonstrates the CHCHD2 antibody detected the CHCHD2 protein (arrow).



CHCHD2 antibody (Center) (Cat. #AP10055c) immunohistochemistry analysis in formalin fixed and paraffin embedded human colon carcinoma followed by peroxidase conjugation of the secondary antibody and DAB staining. This data demonstrates the use of the CHCHD2 antibody (Center) for immunohistochemistry. Clinical relevance has not been evaluated.



CHCHD2 Antibody (Center) (Cat. #AP10055c) flow cytometric analysis of WiDr cells (right histogram) compared to a negative control cell (left histogram). FITC-conjugated goat-anti-rabbit secondary antibodies were used for the analysis.

CHCHD2 Antibody (Center) - Citations

- [CHCHD2 is a potential prognostic factor for NSCLC and is associated with HIF-1α expression](#)